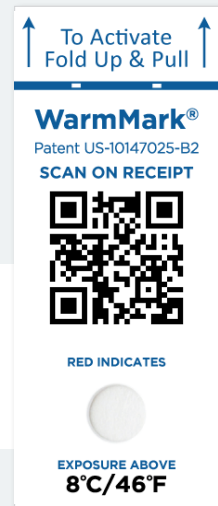


## WarmMark QR

WarmMark QR is a single-use, battery free, connected time-temperature sensor enabled by smart phones to seamlessly determine if a condition (i.e. temperature) excursion has occurred and reports this condition along with time, date, location, and serial number to the SpotSee cloud. SpotSee's cloud platform displays individual sensor information and high-level condition insights to aid shipping and quality improvements. WarmMark goes from white to pink/red when unacceptably high temperatures have been experienced.



### Improve Decision Making

Remotely identify, analyze, and improve problem areas or lanes in the cold chain.

### Visualize Cold Chain Performance

Cloud-based temperature excursion monitoring with real time insights of sensitive asset condition down to the patient level. When your patient or customer knows, so do you.

### Compliance & Data Security

24/7 web-based cloud access to shipment temperature condition, built to comply with 21CFR Part 11 record keeping and user access requirements.

### Adoption Made Easy

No app required. Designed for use by all cold chain personnel and more - from manufacturer all the way to the patient.

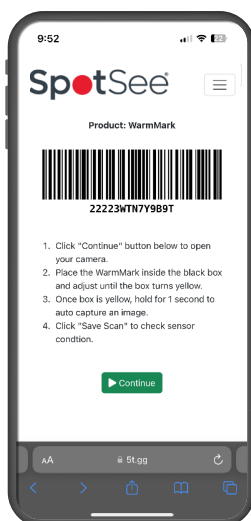
### How It Works:

- Arm sensor and apply to product
- WarmMark senses environmental temperature that your shipment is subject to
- Recipient scans QR code with smart phone to access condition information
- Real time scan data is sent to the cloud for shipper review

#### Initial QR Scan



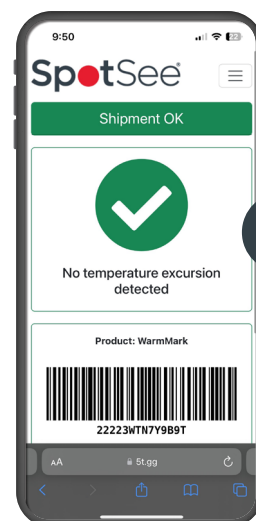
#### Serial Number & Scan Instructions



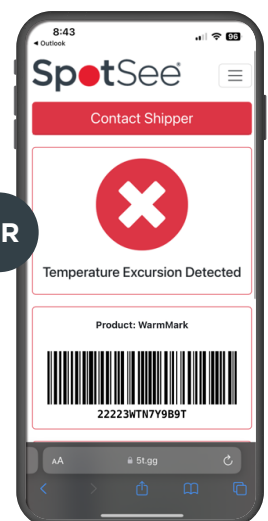
#### Vision System Check



#### Condition Information



OR

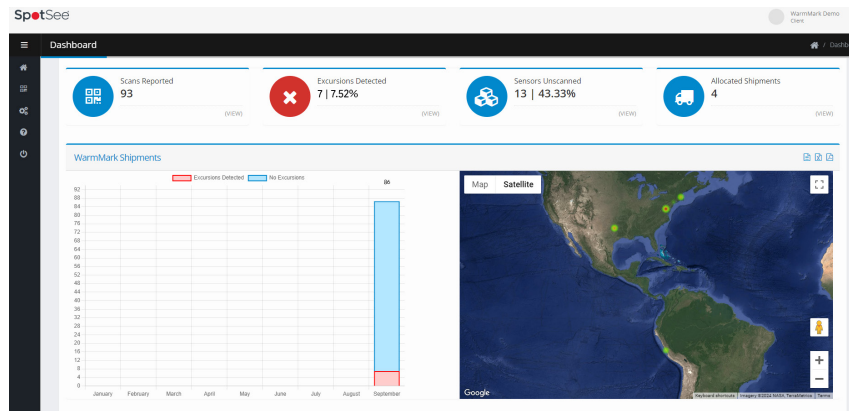


## WarmMark QR

### SpotSee Cloud

A dedicated cloud platform designed for compatibility with low-cost, single-use temperature sensors utilized in life science cold chain applications. Track the temperature end-state of critical and high-volume assets at each step in the cold chain.

#### Dashboard:



#### Individual Sensor View:

The individual sensor view displays a table of shipment data with columns: Product, Sensor ID, Shipment ID, Shipment Condition, Sensor Image, Location, Last Scan, Time Zone, and History. The table lists several shipments with their respective sensor IDs and conditions.

Product	Sensor ID	Shipment ID	Shipment Condition	Sensor Image	Location	Last Scan	Time Zone	History
WarmMark	22228T7Y0A054	QF	✓	View Image	View Map	2024-09-27 14:27:00	America/Lima	+
WarmMark	22228T7Y0C067	QF	✓	View Image	View Map	2024-09-25 10:03:28	America/Lima	+
WarmMark	22228T7Y0E270	QF	✓	View Image	View Map	2024-09-25 10:03:07	America/Lima	+
WarmMark	22228T7Y0F000	QF	✗	View Image	View Map	2024-09-25 10:03:02	America/New_York	+
WarmMark	22228T7Y0A700	QF	✓	View Image	View Map	2024-09-25 10:03:00		+
WarmMark	22228T7Y0C060	QF	✓	View Image	View Map	2024-09-25 05:05:06		+

### A to B Visibility

The data you need, when you need it. SpotSee Cloud and connected single-use temperature sensors provide shipment condition status from the end user (even patient). Ascertain the time, date, location, and condition of every sensor you deploy when scanned by a smart phone.

### Simplify Data Collection

Gathering information for better decision making has never been easier. Blind spots in the cold chain exist in the last mile but now WarmMark QR fills the gap and provides visibility where there previously was none.

### Package Level Monitoring

Criticality doesn't only apply to bulk shipments. WarmMark QR can be used at the carton or item level since it is a single-use, low-cost temperature sensor that doesn't require a return program and can remain on the item down to the patient for the ultimate peace of mind.